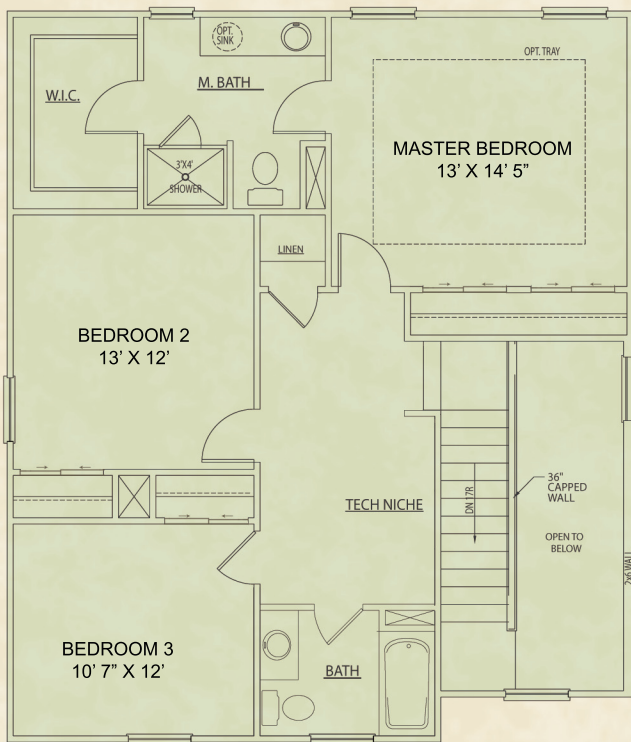


The Mansfield

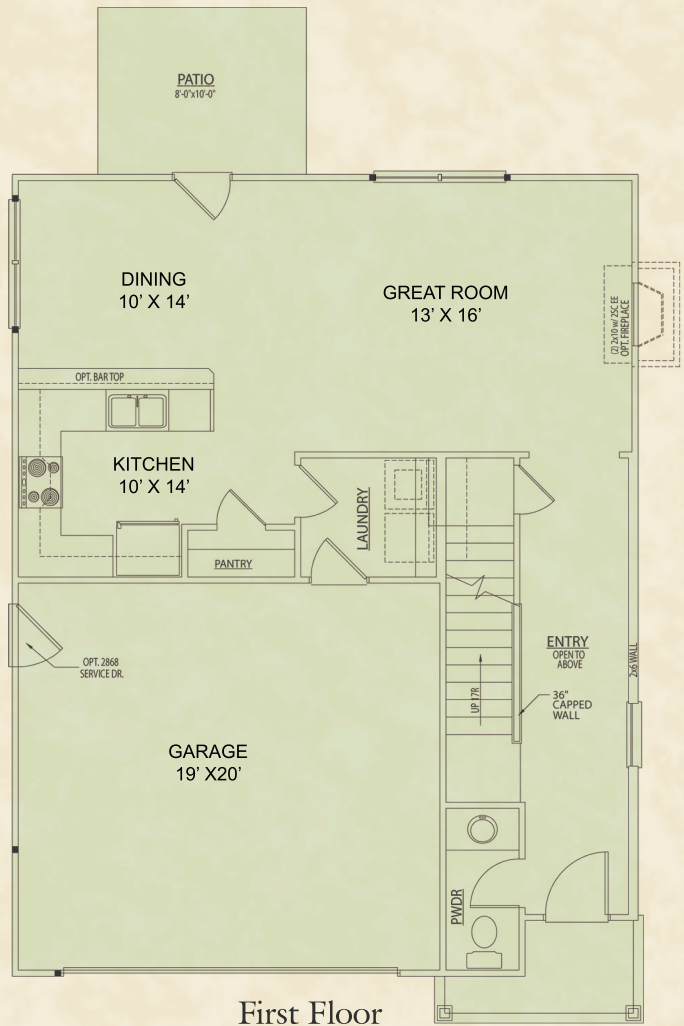
HEATED SQUARE FOOTAGE

FIRST FLOOR - 752
 SECOND FLOOR - 872
 TOTAL FINISHED - 1624

NOTE: FINISHED SQUARE FOOTAGE CALCULATIONS FOR THIS HOUSE WERE MADE BASED ON PLAN DIMENSIONS ONLY AND MAY VARY FROM THE FINISHED SQUARE FOOTAGE OF THE HOUSE AS BUILT. SQUARE FOOTAGES WERE DETERMINED BY CALCULATING THE AMOUNT OF FLOOR SPACE ON ANY GIVEN LEVEL, THEREFORE STAIRS ARE OMITTED FROM UPPER LEVEL CALCULATIONS.



Second Floor



First Floor