

The Whitfield

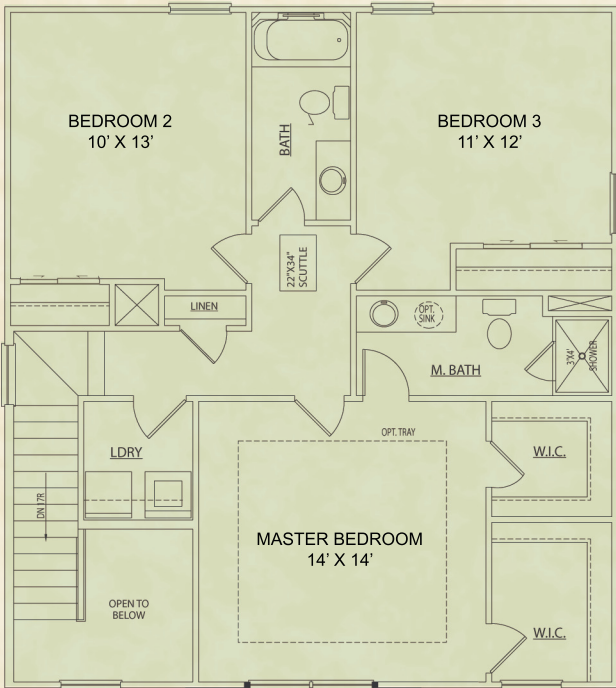
HEATED SQUARE FOOTAGE

FIRST FLOOR - 729

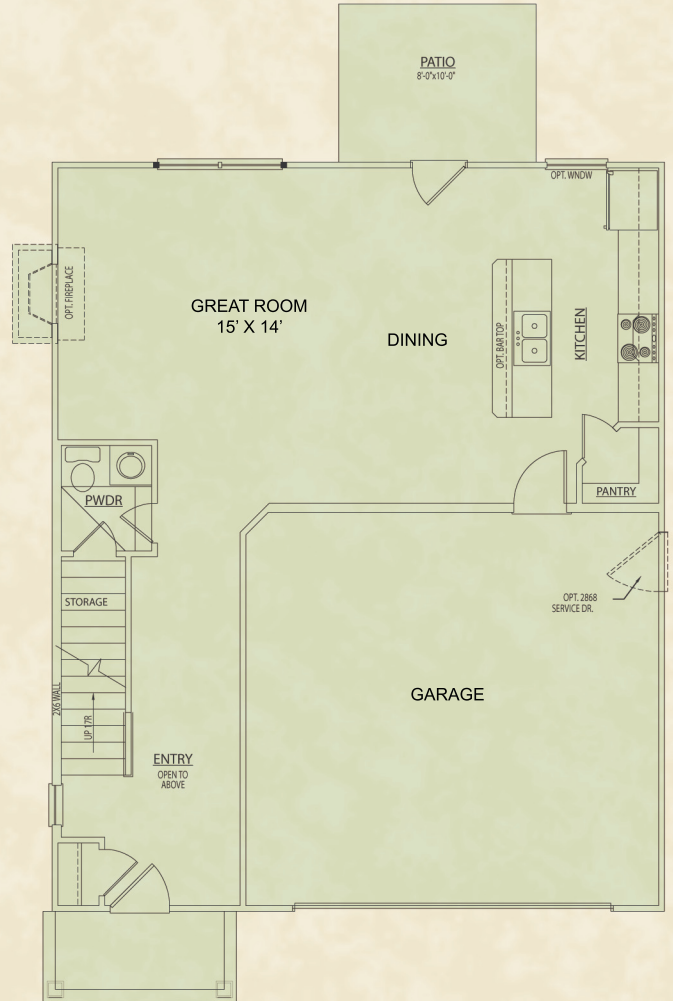
SECOND FLOOR - 971

TOTAL FINISHED - 1700

NOTE: FINISHED SQUARE FOOTAGE CALCULATIONS FOR THIS HOUSE WERE MADE BASED ON PLAN DIMENSIONS ONLY AND MAY VARY FROM THE FINISHED SQUARE FOOTAGE OF THE HOUSE AS BUILT. SQUARE FOOTAGES WERE DETERMINED BY CALCULATING THE AMOUNT OF FLOOR SPACE ON ANY GIVEN LEVEL, THEREFORE STAIRS ARE OMITTED FROM UPPER LEVEL CALCULATIONS.



Second Floor



First Floor