

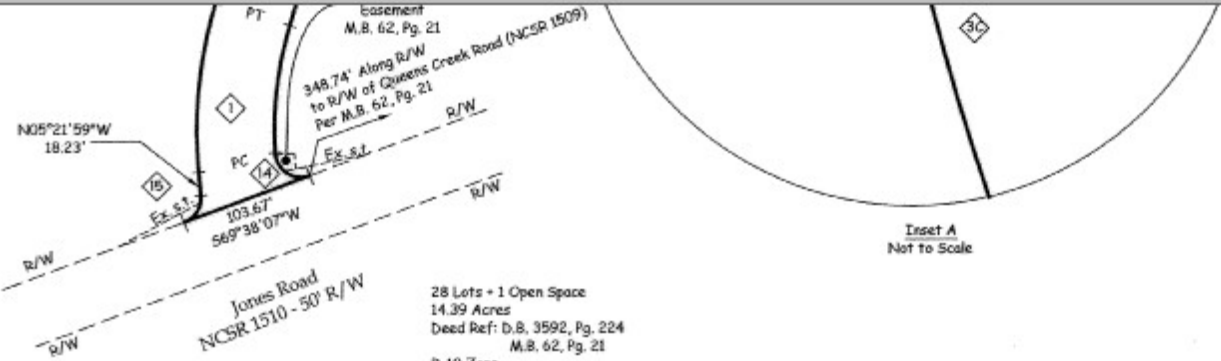
Specification, see
D.B. 3160, Pg. 681
M.B. 44, Pg. 95

Division of Tiny Phillips Estates
M.B. 44, Pg. 95

Common Area
0.66 Ac.
To Be Maintained by
And Conveyed To
HOA

See Inset A

Matchline
For Continuation
See This Sheet



28 Lots - 1 Open Space
14.39 Acres
Deed Ref: D.B. 3592, Pg. 224
M.B. 62, Pg. 21

R-10 Zone
FINAL PLAT

Sheet 2 of 2

WATERCREST LANDING SECTION I

Swansboro Twp., Onslow Co., North Carolina

OWNER
M Three Partnership, LLC

121 Garnet Lane
Jacksonville, NC 28546
(910) 346-9068

CONTROL POINTS

CP #459	N=351,239.980	E=2,552,114.045
CP #651	N=351,404.783	E=2,552,503.193
CP #391	N=351,135.940	E=2,552,295.050
CP #284	N=351,497.102	E=2,522,923.550
CP #333	N=351,566.399	E=2,552,818.022
CP #330	N=351,122.052	E=2,552,474.000
CP #106	N=350,818.639	E=2,552,239.525

DATE: 12/04/12

SCALE: 1"=100'

GRAPHIC SCALE: 1"=100'



Parker & Associates, Inc.
Consulting Engineers - Land Surveyors - Land Planners

P.O. Box 978 - 28541-0978
306 New Bridge Street - 28540
Jacksonville, North Carolina
Phone (910) 455-2414 - Fax (910) 455-3441



Field Book: N/A
Disk Name: ACAD #2390
Filename: Watercrest Landing Section-I FP JBM
Job No.: 511014-5091

90A