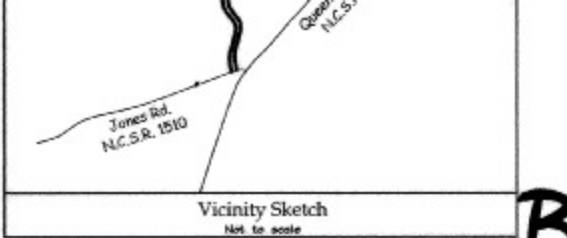


Hirley P. Odum
B. 1087, Pg. 364

Susan Diane Walker
D.B. 1231, Pg. 817

| | |
|-------------|--------|
| N78°21'37"E | 72.46' |
| N38°48'52"E | 41.53' |
| N01°51'59"W | 44.89' |
| N14°36'43"W | 60.16' |

- PT - Point of Tangency
- R/W - Right-of-way
- s.t. - 10' x 70' Sight Triangle
- 3 - Adjoining Lot Number
- 16 - Curve Number
- 46 - Lot Number
- 258 - Street Address
- Wetlands Hatch
- Wetlands Line



Partnership, LLC
B. 62, Pg. 21

John O. & Susan B. Stevenson
D.B. 3159, Pg. 257
M.B. 57, Pg. 68

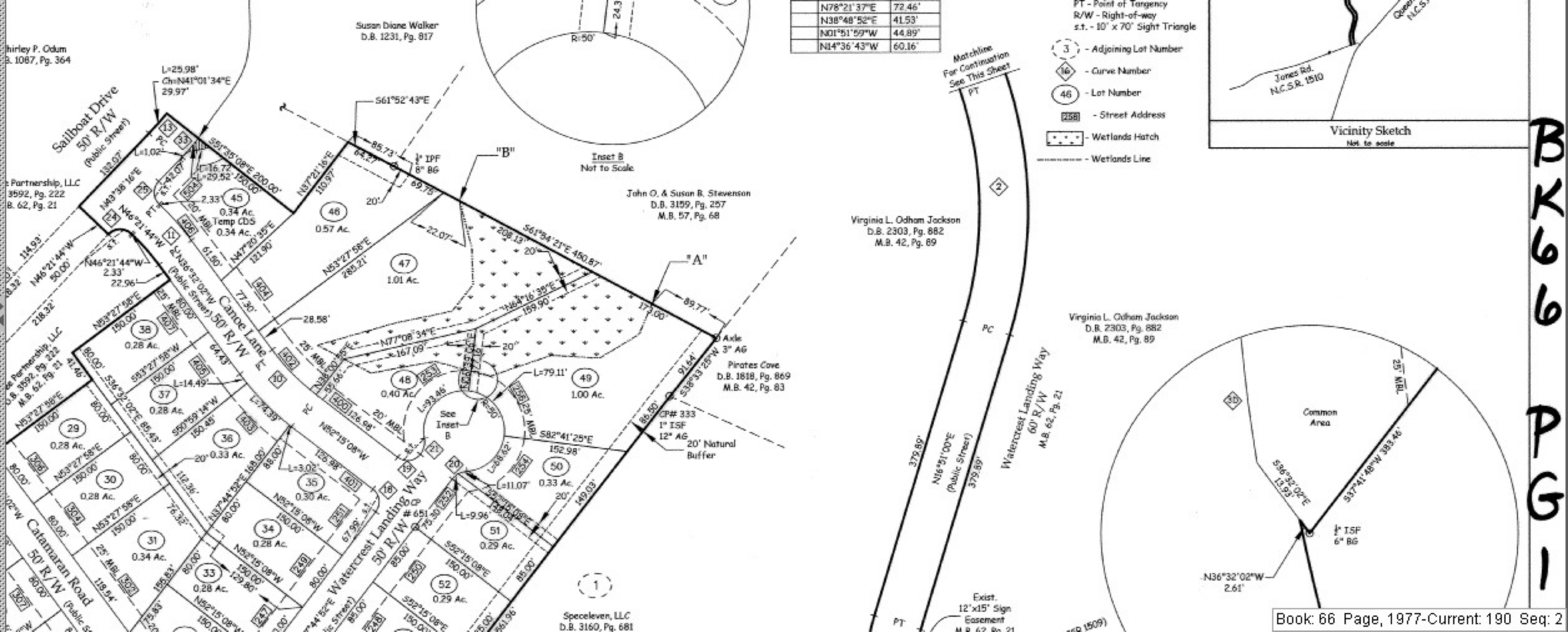
Virginia L. Odham Jackson
D.B. 2303, Pg. 682
M.B. 42, Pg. 89

Virginia L. Odham Jackson
D.R. 2303, Pg. 682
M.B. 42, Pg. 89

Pirates Cove
D.B. 1818, Pg. 869
M.B. 42, Pg. 83

Partnership, LLC
B. 62, Pg. 21

Speeleven, LLC
D.B. 3160, Pg. 681



B-19-A-1